

# La Fontaine des Nouvelles

The Official Newsletter of the Barony of Fontaine dans Sable

December 2010 A.S. XIV



Toys for Tots on Black Friday

# FONTAINE DANS SABLE

BARON AND BARONESS  
THEIR EXCELLENCIES, ANGLIS & ELIZABETH

## BARONIAL RETINUE

SABLE WARDER  
SIR DEVON DRAKESON

AZURE WARDER  
LORD CAELAN MACKINNON

ARGENT WARDER  
LORD WILHELM DE RIJEN

VERT WARDER  
LADY MELANGELL DWIN

WEE WARDER  
MADDIE

BARD OF FONTAINE  
LADY SEIKA

BLACK FOUNTAIN PURSUANT HERALD  
THE ANNA MASTAGGART

HEAD LADY IN WAITING  
LADY DAIRINE INGHEAN GRIOGAIR

CAPTAIN OF THE GUARD  
LORD ARGYLE MACGREGGOR

# BARONIAL RETINUE

(CONTINUED)

## COMPANIONS

DON ESTEVAN DE SEPULTURA  
LADY ISABELLA DI FRANCESCO AMBROSINI

## QUARTERMISTRESS

LADY ANNA KATHERINE VON TELTGE

## CAPTAIN OF THE GOLDEN PAWS:

LORD GATLON DE SEPULTURA

## LADIES IN WAITING

LADY JULIANA CRAVE  
LADY EMILY MACRAE  
LADY ELYENORA DANVEL DE LA ROCHE  
LADY ANGELINA OF FONTAINE  
LADY SEIKA  
LADY EIBHLEAN  
ZORAHANA  
RILEY

## BARONIAL GUARD

LORD SOREN MCKINNEY  
LORD GATLON DE SEPULTURA  
LORD LEONARDO SCARLATTINI  
LORD WILLIAM  
LORD SONAIRE  
LORD LINGORIT GYMPTE INN EYKR (RESERVE)

## BARONY OF FONTAINE DANS SABLE NOBILITY

BARON AND BARONESS...THEIR EXCELLENCIES ANGLIS & ELIZABETH  
(REID ANDERSON & LYDIA IRELAND)  
BARON@FONTAINESCA.ORG , BARONESS@FONTAINESCA.ORG

### BARONIAL OFFICERS

SENEŠČAL..... LADY LASAIRFHIONA INGHEAN AN SHEANSHADHE  
(KRISTA LEWIS)- (SOS)793-5789  
SENEŠČAL@FONTAINESCA.ORG

KNIGHT MARSHALL..... SYR MICHAEL PATRICK MCBAIN  
(MICHAEL BURGESS)  
KNIGHTMARSHALL@FONTAINESCA.ORG

RAPIER MARSHALL..... THE ARGYLE MCGREGGOR  
(DEXTIN WILSON)- (SOS)801-2545  
RAPIER@FONTAINESCA.ORG

CAPTAIN OF ARCHERS..... LORD LINGORIN GYMPIE INN EYKR  
(BOND KINNEY) (SOS)330-2475  
FONTAINEARCHERS@YAHOOGROUPS.COM

EXCHEQUER..... LADY ALAMANDA DELA ROSA  
(JENNIFER LEWIS)- (SOS)716-5282  
EXCHEQUER@FONTAINESCA.ORG

CHATELAINE..... THE ISABELLA DI FRANCESCO AMBROSINI  
(AMANDA PRICE)- (SOS)801-6896

MISTRESS OF THE LIST..... LADY MICHELET MACRAE CHALVAUX  
(MICHELLE TILLEN)- (SOS)860-5195

# BARONIAL OFFICERS

(CONTINUED)

HERALD, BLACK FOUNTAIN PURSUIVANT..... THE ANNA MACSTAGGART  
(ERIN NIELSON)- (505)716-2225

HERALD@FONTAINESCA.ORG

MINISTER OF ARTS AND SCIENCES..... THE ANNA KATHERINE VON  
TELTGE

(ANNA KINNEY)- (505)330-8531

ARTSANDSCIENCES@FONTAINESCA.ORG

BARONIAL SCRIBE..... LADY EMILY MACRAE

SCRIBE@FONTAINESCA.ORG

CHRONICLER..... LADY MELANGELL DUN

(MELODY BLISS)- (505)947-1998

CHRONICLER@FONTAINESCA.ORG

MISTRESS OF CHILDREN..... THE MARIAH ABRAMSDOTTIR

WEB MISTRESS..... BROTHER ROWLAND

(DAVE MEYERS) DAVEMEYERS@GMAIL.COM

QUARTERMASTER..... THE ANNA KATHERINE VON TELTGE

(ANNA KINNEY)- (505)330-8531





## News From the Seneschal

Greetings Unto the Populace of Fontaine dans Sable,

The Holiday Season is upon us. I want to wish everyone a very Merry Christmas and the Happiest of New Years. I hope that Thanksgiving was wonderful for everyone. We have so much to be thankful for.

I would like to thank everyone who volunteered their time and energy at Toy Box. It was a wonderful event, the fighting was amazing, the desserts absolutely delicious and the A&S entries were outstanding. Congratulations to TUL Tam our new Defender of the Children and to Don Estevan our new Protector and Sentinel of the Children. A big congratulations to Lady Veronique our Premier Guardian of the Children. I had a wonderful time and I very much enjoyed the Archery shoot. Thank you all for attending and helping support Toys-4-Tots.

Speaking of Toys-4-Tots, I want to thank everyone who volunteered for our Black Friday Toys-4-Tots drive. I know it was cold out there. Thank you all.

I know this is a busy time of year for everyone and I hope it is also a joyous time. We have a few events coming up that are close to home. Dec 4th is Yule Revel at Riverhold in the Shire of Rio de Los Animas. It is a wonderful event to simply enjoy. Dec 18th is al-Bazzan's Mid-Winter. Jan 15th is our 12th Night and War Practice. If you are able to attend these events please drive safely.

YiS,  
Lady Lasairfhiona inghean an Seanchaidhe  
Seneschal





## Salutations of the Knight Marshall

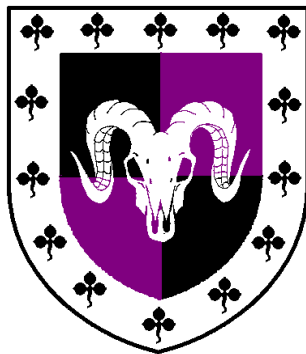
Greetings to the Barony,

What a wonderful month November was. The leaves have fallen as the temperature has dropped. As you prepare for the upcoming events remember to bundle up and take extra for yourselves or those who may need a little extra.

First and foremost, the Outlands saw the Coronation of Boleslav and Astrid, King and Queen. At that celebration, **THL** Anna MacTaggart graciously accepted the position as their Blue Iris Herald and the Barony was represented very well on both fields of combat. As I understand, this was a great event for those who traveled to it.

Secondly, the Barony took the opportunity to gather at our Toy Box event. This was definitely a fine event; and a very sweet one as well. Huzzah! To the bakers! I will exclaim the prowess displayed by the new Defender of the Children . . . **THL** Tam McGrimm. Well done . . . to all whom entered the Heavy weapons tourney. On a side note, I was personally honored by the populace, those who took time to observe the Memorial for a fallen Veteran taking place just a few feet away. Thank You.

Enjoy the beginning of this season, support each other and the Shire to the north, embrace the Holidays, and continue to make yourselves and your armor battle ready.



Prepare and Be Safe  
Syr Michael MacBain

# MISSIVES FROM THE RAPIER MARSHAL

GREETINGS UNTO THE FINE BARONY OF FONTAINE AND ANY WHO COME BY THESE WORDS,



AS FIGHTERS HERE WE FIND OURSELVES, DEEP WITHIN THE HEART OF OUR WAR PREPARATIONS. SEVERAL CHALLENGES HAVE PASSED, AND YET SO MANY ARE AHEAD. AS WE LOOK BACK ON PAST BATTLES AND REMEMBER HOW EACH WAS LOST OR WON WE SHOULD USE EACH AS A TOOL TO FUTURE BATTLES. EVERY TIME WE HAVE A DUEL OR EVEN A LARGE MELEE WE SHOULD TAKE SOMETHING FROM IT WITH US. THAT SAID, I WOULD LIKE TO OFFER A CHALLENGE TO ANYONE WHO FIGHTS. NOT A CHALLENGE BETWEEN FIGHTERS BUT A CHALLENGE FOR OURSELVES. I WOULD LIKE EVERY FIGHTER OUT THERE TO REALLY TAKE A LOOK AT EACH FIGHT YOU HAVE AND TRY TO SINGLE OUT ONE THING THAT YOU LEARNED. NOT ONLY WILL THIS HELP YOU NOTICE WHAT YOU MAY BE DOING WRONG BUT ALSO WHAT YOU ARE DOING VERY RIGHT. I THINK THAT THIS WILL HELP TO FORCIFY OUR KNOWLEDGE THAT WE CAN LEARN SOMETHING FROM EVERYONE WE FIGHT. DON'T DISCOUNT THAT NEW FIGHTER THAT HAS ONLY PUT ARMOR ON ONE TIME, OR THAT OLDER GREY HAired DON OR KNIGHT THAT LOOKS OR SEEMS VERY SLOW. EACH AND EVERY PERSON THAT CROSSES BLADE WITH YOU HAS SOMETHING THAT THEY CAN TEACH YOU. AFTER LOOKING AT THIS WEALTH OF KNOWLEDGE THAT WE HAVE NOW PRESENTED OURSELVES WITH WE CAN TAKE IT ALL AHEAD INTO THE REST OF THE BATTLES THAT LIE IN FRONT OF US AND MAYBE HAVE MORE ENLIGHTENED FIGHTS. I WISH YOU ALL LUCK IN THIS ENDEAVOR, FOR AT TIMES IT WILL BE HARD BUT WE ALL WILL PREVAIL AND BE THE BETTER FOR IT.

THE ARGYLE MCGREGGOR  
BARONIAL RAPIER MARSHAL  
FONTAINE D'ANS SABLE  
OUTLANDS



LORD ROBERT AND HIS EXCELLENCY, MASTER ANGUS AT TOYS FOR TOTS



## *Announcements from Black Fountain Pursuivant*

*Greetings to the populace of Fontaine,  
Congratulations to Lady Melangell Dwn the newest Palma  
Aurea!*

*Here is an update on Submissions,*

### *At Kingdom*

*Elizabeth Anne Grene - New Name. Device resubmission (Kingdom) 11/10 LoP  
Argent, in bend sinister two banners purpure and vert, each suspended from poles  
fesswise sable.*

### *At Laurel*

*Order of the Hourglass (badge resubmission, kingdom) 6/10 LoR  
Sable an hour glass or within eight flier-de-lis in annulo bases outward argent.  
Wilhelm Reissen (new name) 6/10 LoR*

*In service to the Dream,*

*THL Anna MacTaggart*

*Black Fountain Pursuivant*



**MORE TOYS FOR TOTS HELPERS**



## *Hear the words of the Minister of Youth*

*I was proud to see all of the children in attendance at Toy Box.*

*This event brings home to our children the concepts of giving back to the community, and charity in general. Nothing could be better for their overall development than a belief in giving and taking care of others.*

*I would like to thank all of the kids (young and not so young) and their amazing brownies. I found them all delectable. Congratulations to Destiny and Serenity (and grandma) for their amazing yumminess!*

*As Twelfth Night approaches, I was obviously delighted to hear of the Viking theme. I had planned to do a class, and have changed it to. . . . . Viking treasure necklaces!*

*I am a little excited, but will need some help in gathering supplies. For the necklaces, we will need a variety of large beads, ceramic or glass, and other tokens. If anyone has a few, perhaps a left over bead or two from another project, and would be willing to donate them to the cause, I would greatly appreciate it. Please contact me for any other details or questions. [avikinggoddess@yahoo.com](mailto:avikinggoddess@yahoo.com)*

*As ever, Yours*

*Mariah*



## GREETINGS FROM THE CHRONICLER

hail fontaine!



we have had a busy month. december will continue to be just as busy, both within our barony and our mundane lives. i was thrilled to watch the tournaments at toybox, knowing that those who fought, as well as all the attendees that day were helping to make the lives of less fortunate children a little happier this christmas season. i also enjoyed shooting in the sentinel of the children shoot the following day. sir clara can created a fabulously fun shoot!

from the chroniclers office, there is one major change coming. waivers for all submissions for the newsletter will have to be sent every month beginning in january 2011. there are 3 types of waivers: one for creative work (such as articles and artwork), one is for photography and the third is for photography models. one waiver must be signed for every creative work or photo (one waiver must be signed by each person whose face is identifiable in a photo.) these have to be on file for any baronial publication, but permission for multiple publications can be given on a single waiver. these waivers can be electronically signed. i have sent the pdf files to brother rowland to be added to the forms on the website. if anyone has questions about how or when these waivers need to be used, please do not hesitate to contact me at 505-947-1998 or [chronicler@fontainesca.org](mailto:chronicler@fontainesca.org)

Yis,  
Lady MelangeLL DWN



# Cotehardie Classes

This wonderful class was taught by Lady Alamanda. If you have any questions, please contact her at [lewijenn@yahoo.com](mailto:lewijenn@yahoo.com)

Creating a 14<sup>th</sup> Century Self-Supporting Dress (AKA Cotehardie)

A three part class presented by Lady Alamanda de la Roca

## Part 2- Sewing the dress

This is the second part of the three part class on creating a 14<sup>th</sup> Century dress. The instructions in this handout are designed for intermediate level sewers. As I go I will try to give you tips on how I construct the garment, but if you know a way you are more comfortable with feel free to use it!

A note about lining: I generally do not line my dresses unless the fabric is thin or unless I think I will need extra support in the bosom area. There are two ways to line the dress, by creating a bag lining (basically creating a second dress and attaching the two at the neck and front lacing area) or interlining (laying one layer on top of the other and sewing both at the same time). I generally line using the interlining technique and only go to just past the hips, although in the case where fabric is thin I would completely line the dress.

Don't forget! Just like with a modern pattern, you will want to transfer any marks (such as the start point for the gores) from the pattern to your fabric using chalk or a fabric marker.

### Step 4: Sewing the body of the dress

1) Attach the back gore (full gore) to the center seam of one of the back quarter panels (doesn't matter which one). You want to place the point of the gore about 1 to 1½ inches above where you want the gore to start to account for the seam allowance, and pin/sew from the top to the bottom of the gore. Don't expect the bottom of the gore to be even with the bottom of your skirt- it should

be longer than the quarter panel. We will even out the bottoms when the dress is hemmed.

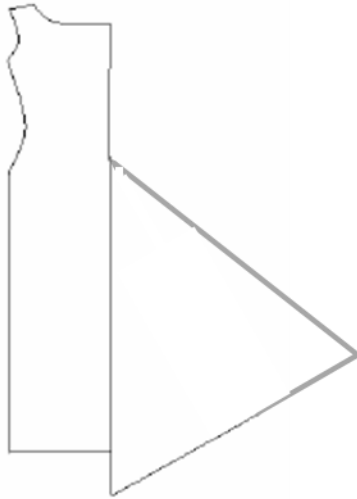


Figure 1. Sewing the gore to the quarter panel

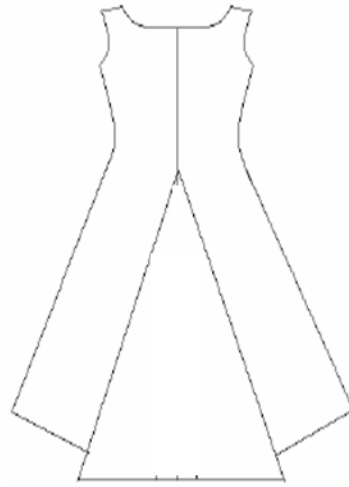


Figure 2. The completed back

After <http://www.mathildegirlgenius.com/Documentation/Lesson2Assembly.pdf>

2) Sew the two back panels together by sewing the center back seam, and then along the side of the gore. Make sure that the gore starting points on each of the back quarter panels match!

3) Sew a side gore (full) to each of the back quarter panels.

4) Sew a half gore to each of the front quarter panels, the bias of the gore (the angled side, not the straight side) against the center front.

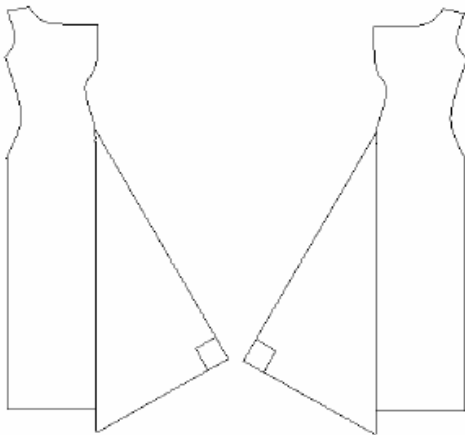


Figure 3. The gores attached to the front panels

5) **BASTE** the front seam together, matching the gore points.

6) Sew the front to the back at the sides, making sure the gore start points match.

### Step 5: Fitting the dress

Now that you have sewn the body of your dress, you need to do a final fitting with the undergarments you will be wearing underneath the dress. This means if you are making the versatile layer, you will **NOT** be wearing a bra. To do the final fitting, put the dress on and have your partner snug the bodice to your liking.

1) For the fashion layer: Have your partner fit the dress around the bodice while you are standing. Places to adjust will be under the breasts, along the sides, and the small of the back. You may also wish to adjust the shoulder seams. Pin places you wish to adjust.

For the versatile layer: Lay on your back on the floor while your partner tightens the bodice directly under the breast in a band about 3 inches wide. This band will need to be pulled as tight as it will go- we don't want "the girls" to creep out the bottom! Adjust and pin both sides, making sure to keep the center seam straight and in the center of the body. Get up, walk around, let the fabric warm to your body. You may feel the fabric loosen. After about 15 minutes, lie down again and re-adjust your seams. After the under the bust band is finished, stand up and let your partner adjust the shoulders for comfortable support.

2) For both layers, once you are satisfied with the fitting, have your partner "mark" the seams with a row of pins on each side of the seam (going through only one quarter panel each). Take off the dress (you may need to rip the basting stitches of the front seam). Turn the dress inside out and mark the seams with chalk or a washable fabric marker along the line of the pins. Take out the pins, match seams, and sew. Trim the new seams to about a  $\frac{1}{2}$  inch seam allowance.

Continue to Part 3: The finishing touches!

# *Mariah's Apron Dress (Conjectural) Pattern*

## *INTRODUCTION*

*-OR-*

*How can you have a conjectural pattern?*

*When I began researching Norse or Viking apron dresses, I met with a lack of scientific first hand information, and an overabundance of speculation and theories. It has taken years of research and more importantly finding the right sources in the abundance to make sense of this simple garment.*

*Quite simply, there is no example of a Viking apron dress. Time has destroyed all. What we have to work with are fragments, the largest of which is a few inches which had been cut into rags, soaked in tar and stuffed into the crack of a ship as waterproofing. The vast majority are individual fibers which survived only due to their proximity to metal (such as brooches, embroidery or trim).*

*While these fibers have given us much data on fiber choices, dye types and colors, they do little to help reconstruct an actual garment. Without going into detail on grave goods, I will make the only definitive statement of this entire presentation. There is no way to create a true replica of an apron dress at this time.*

*That is why this is called "A conjectural pattern". I am unable to substantiate anything you see in the next pages, but have used what knowledge I have gained from great researchers on the subject and added a little common sense about the subject to create a pattern and dress style unlike the others. I hope one day to have access to anything concrete with which to base an apron pattern, but at this point I am not hopeful. Time just continues to destroy any evidence that may have yet been discovered.*

### *Model patterns*

*There are two basic patterns available online, for your inspection. These are the patterns I initially tried to make, with much fuss and, although beautiful, I was never completely satisfied. My main complaint with these two patterns is that I am lazy. I was looking for a more simplified version of a pattern, which would create the same effect once sewn. These patterns are two or three panels with gores.*

*Mistress Thora Sharptooth, one of the smartest and most educated individuals on Norse culture in the Society, and perhaps the "real world". She*

is beyond more capable than I, and her dress pattern is as accurate as you will find, considering all the evidence alone.

<http://www.cs.vassar.edu/~capriest/image/apdress.jpg>

The other pattern is a more consolidated cutting pattern, in an effort to spare fabric, in our modern fabric widths. It dramatically reduces the amount of fabric needed, however, it is a bit more complicated to understand until you have laid it out, and you must measure carefully and check your figures before cutting.

<http://sca.uwaterloo.ca/mjc/sca/apron.html>

There is debate on the number of panels. The apron dress either evolved over the years into a more complex or more simplified dress; or the differences are evidence of differing tastes in different locations. Perhaps the wealthy were able to afford more fabric, and showed off that wealth with more elaborate dresses; perhaps those in warmer climates wanted looser garments than those of colder climates.

### *My interpretation of the evidence*

#### *-Why this pattern is different-*

#### *Fabric width*

*My interpretation: it is far easier and faster to weave longer fabric than weaving wider fabric, especially if the warp is loose.*

- *Laws were written establishing a legal width for fabric production -two ells (forearm) and a thumb*
- *A measuring stick was available to ensure fabric width was sufficient to avoid penalty*

*Having never woven on a warp weighted loom, I am making a huge supposition here. I have only woven on a full sized floor loom, where the warp is threaded and then wrapped around a tension bar. It is much easier to weave longer, skinny fabric than short, wide fabric. I believe the same would be true when the warp is just balled and tied to weights and hung from the tension bar. Fabric width estimates from other garments is 55cm, as seen in the Bocksten Tunic.*

*(<http://www.forest.gen.nz/Medieval/articles/garments/bocksten/bocksten.html> )*

*This has led me to the idea of creating a pattern based on a single width, where the gores are attached, instead of cut onto the panel like wings. I think it is a more conservative use of*

fabric, as you could determine the precise width needed for each individual, and make the perfect width. It would also lead to an extremely easy dress to sew, as you would only need to treat the cut ends of each panel/gore and the cross cut on the gores. By using the fabric, including the selvage, you would create durability.

### **Existing dress fragment**

*My interpretation:* I believe this piece was cut down for a child or adolescent. I think that the shape was simpler than cutting a separate panel and gore because the fabric was already wider than needed.

- Found within the crack of a ship - cut into a rag and soaked in tar
- One piece of fabric, without any seams
- Small in size/stature, possibly a larger dress cut down to a smaller size as a "hand me down"

It is also possible that the dress pattern (if the gores were cut into the dress) could have been for a lady of higher station, who could afford to buy or weave widths that went beyond what was necessary to achieve a particular drape or effect, and cut the pattern as created by Mistress Thora Sharptooth. Perhaps my conjecture would be better suited to those individuals of more modest means, where economy of fabric and ease of construction would be paramount.

I will not get into the actual measuring/cutting/assembly/finishing information here, as it is best explained in person. This is merely an attempt to explain the differences in the pattern I use from the other options found hand created by far more educated persons than I to give you the basis for what I believe to be the easiest pattern to cut and sew, and being as frugal with fabric as possible without sacrificing the design.

*As ever, Yours*

*TL)MariahAbramsdottir*

# December 2010

Sunday	Monday	Tuesday	Wednesday	Thursday	Friday	Saturday
			1	2	3	4
			Officer's Meeting 6 PM Populace Meeting 7 PM	Archery Kids 4 PM Adults 5 PM		<b>Fighter Practice @ Rio</b> Heavy 12 PM Rapier 12 PM Yule Revel
5	6	7	8	9	10	11
Archery 10 AM				Archery Kids 4 PM Adults 5 PM		<b>Fighter Practice</b> Heavy 11 AM Rapier 11 AM
12	13	14	15	16	17	18
Archery 10 AM				Archery Kids 4 PM Adults 5 PM	Bids for 12 <sup>th</sup> Night close	<b>Fighter Practice</b> Heavy 11 AM Rapier 11 AM Al-Barran's Midwinter
19	20	21	22	23	24	25
Archery 10 AM				Archery Kids 4 PM Adults 5 PM		<b>Fighter Practice</b> Heavy 11 AM Rapier 11 AM
26	27	28	29	30	31	
Archery 10 AM				Archery Kids 4 PM Adults 5 PM		

# January 2011

Sunday	Monday	Tuesday	Wednesday	Thursday	Friday	Saturday
						1
						<b>Fighter Practice</b> Heavy 11 AM Rapier 11 AM
2	3	4	5	6	7	8
Archery 10 AM			Officer's Meeting 6 PM Populace Meeting 7 PM	Archery Kids 4 PM Adults 5 PM		<b>Fighter Practice</b> Heavy 11 AM Rapier 11 AM
9	10	11	12	13	14	15
Archery 10 AM				Archery Kids 4 PM Adults 5 PM		Fontaine 12 <sup>th</sup> Night & War Practice
16	17	18	19	20	21	22
Archery 10 AM				Archery Kids 4 PM Adults 5 PM		<b>Fighter Practice</b> Heavy 11 AM Rapier 11 AM
23	24	25	26	27	28	29
Archery 10 AM				Archery Kids 4 PM Adults 5 PM		<b>Fighter Practice</b> Heavy 11 AM Rapier 11 AM Southern War Practice- St Goliath
29	30	31				
Archery 10 AM						

## BARONIAL SPOTLIGHT

FROM THE BARONY OF FONTAINE CAME THE CALL FOR LORDS AND LADIES OF ALL AGES TO SHARPEN THEIR SKILLS AND BRING THEIR BEST TO THE BATTLE FIELD.... ON A WONDROUS BLISTERY DAY THE FIGHTERS TOOK THE BATTLE FIELD TO DEFEND THE CHILDREN OF THE KNOWN WORLD. MANY FIGHTERS WOULD BATTLE HARD AND VALIANTLY ALTHOUGH ONLY ONE WOULD RISE ABOVE THEM ALL TO BE NAMED DEFENDER OF THE CHILDREN...

ONTO THE HEAVY BATTLEFIELD CAME GALLANT KNIGHTS, ALL WITH A DESIRE TO PLEASE THEIR MAJESTIES AND THE POPULACE AS A WHOLE... ONE BY ONE THEY FELL TO THE SHARP WIT AND TALENT OF THE TAM MACGRIMM ... HE ALONE STOOD ABOVE THE REST TO BE DEEMED DEFENDER OF THE CHILDREN..

NOW THE TIME CAME FOR THE RAPIER FIGHTERS TO TAKE THE FIELD... WITH SHARP BLADES READY AND TIME NOT A FRIEND. THEY WENT TO QUICK BATTLE. IN SHORT WORK DON ESTEVAN, STOOD TALL ABOVE ALL THE REST. HIS SWORD EVER THE SHARPEST; THEIR EXCELLENCY WERE HONORED TO NAME HIM PROTECTOR OF THE CHILDREN... IT IS ALSO THIS WRITER'S UNDERSTANDING THAT NOT ONLY WAS DON ESTEVAN'S SWORD EVER SO SHARP, HIS ARROWS HAD THE TRUEST OF FLIGHT AS WELL. GRANTING HIM ALSO THE AWARD OF SENTINEL OF THE CHILDREN

NEW TO THE BATTLEFIELD THIS YEAR WAS GUARDIAN OF THE CHILDREN... ON THIS BATTLE FRONT CAME THE ARTISANS OF THE LAND.... MANY READY TO DO BATTLE ON A FRONT THEY HAD NEVER FACED BEFORE... THE COMPETITION WAS STEEP AND THE WORK BEAUTIFUL.. THOUGH ONLY ONE COULD BE NAMED, AS SUCH LADY VERONIQUE TOOK HOME THE HONOR OF GUARDIAN OF THE CHILDREN....

THIS LEFT ONE BATTLE LEFT TO FIGHT... THAT WAS THE DESSERT COMPETITION.. ALTHOUGH THIS POET IS NOT OVERLY FOND OF BROWNIES, I MUST SAY THEY WERE ALL VERY DELICIOUS. THE BARONY OF FONTAINE IS OBVIOUSLY FULL OF WONDERFUL COOKS. THE HONORS IN THIS BATTLE WERE SPLIT... YOUNG DESTINEE AND SERENITY TOOK THE BEST OF POPULACE AND LORD JOSHUA TOOK THE SECRET JUDGE'S VOTE...

HOWEVER THE HIGHLIGHT OF THE DAY FOR THIS WRITER WAS DON ESTEVAN CALLING HIS EXCELLENCY ANGUS BEFORE THEIR EXCELLENCIES ANGUS AND ELIZABETH.... ALTHOUGH AN HONEST AND UNDERSTANDABLE FLUB, IT WAS A WONDERFUL HIGHLIGHT AND REMINDER OF HOW EVEN THE GREAT AND MIGHTY HAVE THEIR HUMAN MOMENTS.... THE POPULACE AND HER EXCELLENCY HAD A WONDERFUL CHUCKLE AS THE WEATHER BECAME QUITE CHILLY....

HUZZAH TO ALL THAT TOOK THE BATTLEFIELD THAT GRAND DAY.... HUZZAH TO THE WINNERS AND MAY THEIR REIGN BE A QUIET ONE FOR THE CHILDREN'S SAKE....

Greetings unto the Barony of Fontaine dans Sable!

We cordially invite you to our Yule Revel at Riverhold on Saturday, December 4.

\*\*\*\*\*There is a fighter practice at noon, showers will be available afterward.\*\*\*\*\*

Please come and enjoy food and merriment with us as we bring in the Yule Season.

At this Revel if you would like to bring your musical instruments and a spoken verse or two to share that would be lovely. Also there will be a desert contest with secret judges and of course our traditional ornament exchange if you care to participate. It is always a lot of fun.

We are asking for an unwrapped toy or a suggested donation of \$5. These toys will benefit our local hospital children's wing.

Please come and enjoy a great time together with good friends and good food. The event will open at 3:00 and will go until the last person leaves. Dinner will be served FROM 6:30 TO 8:00.

THIS IS BYOB. DISCREETLY WE WILL HAVE SOFT DRINKS AND ICE. ALSO DISPOSABLE DISHWASHERS.

There will BE limited crash space, please contact Her Excellency Adriana for more information. (970) 247-2740, [EDRESS ADRIANA\\_RIVERHOLD@AHO.COM](mailto:ADRIANA_RIVERHOLD@AHO.COM)

Thank you and we look forward to seeing you.

Sincerely,  
Issaac and Ahreal  
Lady Sabyn Edwards

## Directions to Yule Revel in Shire Rio de Las Animas

Make your best way to Durango, CO.

Drive north on Camino del Rio (Highway 550), turn north/left onto Main Avenue at the light at 14th Street.

Continue north on Main Avenue to 32nd Street (light, City Market), turn east/right onto 32nd Street, go to the end.

Turn east/right onto County Road 250, go to the end.

Turn north/left onto Florida Road (County Road 240), drive about 4.3 miles to the intersection with County Road 234.

Continue on Florida/240 for 0.8 mile (across a level stretch and down a hill).

Look for a small sign midway down the hill, indicating County Road 248, the next right turn.

Turn right onto County Road 248. Take the first left, the first right, and turn in the second driveway on the right.

Park inside the gate, come in, be welcome.



# 12<sup>th</sup> night and war practice

hosted by the barony of fontaine dans sable

January 15<sup>th</sup>, 2011

site fees: adult \$10

5~17 \$5 under 5 free

feast: \$5 family cap \$50

non member surcharge \$5 checks payable to: sca inc.~  
fontaine dans sable

war practice site: 9am~3pm

tibbetts middle school, 312 e apache farmington, nm 87401

feast site: 3pm~10pm

harvest convention center

1012 n butler farmington, nm 87401

autocrat: thl anna mactaggart mka: erin nielson (505) 716-  
2225 [sauceyspider@hotmail.com](mailto:sauceyspider@hotmail.com)

co-autocrat: Lady eibhleann mka: kim mangan  
[mangan.kimberly@yahoo.com](mailto:mangan.kimberly@yahoo.com)

feast reservations can be sent to Lady eibhleann

please include name and adult or child for each person

vegetarian meals available with reservation only

reservations accepted until Jan 1st

[www.fontainesca.org/12thnight](http://www.fontainesca.org/12thnight)

sites are dry!

angus and elizabeth, baron and baroness of fontaine dans sable, invite one and all to join us for our 12<sup>th</sup> night celebration. this year we will be enjoying a viking theme. war practice and a&s classes will be held in the beginning of the day. a sack lunch will be available for a small donation. into the evening we will enjoy a tasty feast. a raffle will be held to benefit travel funds. please bring your own table decorations (candles in fireproof containers are allowed).

to war practice site:

from the south: take hwy 64 (west) into farmington. turn right (northwest) onto Broadway

(hwy 64 business route). turn right (north) onto butler ave. turn left (west) onto comanche st.

school is on your left.

from the north: take hwy 516 (southwest) through farmington. turn right (north) onto butler ave.

turn left (west) onto comanche st. school is on your left

to feast site from practice:

from tibbetts: head east to butler ave. turn left (north)

in about 0.5 mile site will be on your right in the mesa shopping center.

for a map to the sites please visit the website

THE SNOW LOOMS CLOSE AS THE LONE WOLF HOWLS  
, WINTERWOLF IS COMING SOON. HERALDS WILL CALL AND  
THE WARRIORS WILL CLASH IN EPIC COMBAT. COME AND  
RAISE YOUR SWORD TO DEFEND BLAIDDWYN! HAIL BOTH  
THE RED AND WHITE COLORS OF THE COLLEGE AS YOU  
RAISE YOUR VOICES AND CHEER YOUR COMRADES WHILE  
THEY GATHER TO LEARN, SING, FIGHT AND TO VIE FOR  
POSITIONS ONLY THE MOST TALENTED, WORTHY, AND  
VALOROUS CAN EARN. THE CHAMPION OF BLAIDDWYN  
(HEAVY COMBAT). THE PROTECTOR OF THE WOLF  
(RAPIER COMBAT). THE MUNIN BARD (BARDIC  
ARTS) BLAIDDWYN EN LIGHTENER (A&S) BLAIDDWYN  
PROVIDER (COOKING). COME AND ACCEPT BLAIDDWYN'S  
INVITATION TO A DAY OF GOOD TRADITION AND  
WONDERFUL FRIENDSHIP. TAKE A CLASS, SHARE A MEAL,  
AND EMBRACE THE HISTORY.

WINTERWOLF  
JANUARY 29TH 2011  
SANDIA PREP,

SANDIA PREP IS LOCATED 1.7 MILES WEST OF I-25 ON  
OSUNA RD NE. FROM NORTHBOUND I-25, TAKE THE SAN  
MATEO/ OSUNA RD EXIT, GO WEST ON OSUNA FOR 1.7  
MILES; SANDIA PREP IS LOCATED ON THE SOUTH SIDE OF  
THE STREET. FROM SOUTHBOUND I-25, TAKE THE OSUNA  
RD EXIT, GO WEST ON OSUNA FOR 1.7 MILES; SANDIA  
PREP IS LOCATED ON THE SOUTH SIDE OF THE STREET.

9AM TILL 2PM

SITE IS DRY

ALISTAIR DI' CARTIER  
AUTOCRAT WINTERWOLF 2011



Final Reminders:

Deputies needed for:

Exchequer

Chronicler

Bids open for:

Of Interest to the Barony

**Websites of Interest for the  
Barony of Fontaine dans Sable**

Fontaine dans Sable's Website: <http://fontainesca.org>

Fontaine's Discussion List: [fontainedanssable@yahoogroups.com](mailto:fontainedanssable@yahoogroups.com)

Fontaine's Largesse List: [fontaine-largesse@yahoogroups.com](mailto:fontaine-largesse@yahoogroups.com)

Fontaine's Archery List: [fontainearchers@yahoogroups.com](mailto:fontainearchers@yahoogroups.com)

Fontaine's Rapier List: [fontaine-rapier@yahoogroups.com](mailto:fontaine-rapier@yahoogroups.com)

Fontaine's Player's List: [Fontaine-Players@yahoogroups.com](mailto:Fontaine-Players@yahoogroups.com)

Fontaine's Brewers List: [fontaine-brewers@yahoogroups.com](mailto:fontaine-brewers@yahoogroups.com)

Fontaine Belly Dancers' List:

[fontainebellydancers@yahoo.groups.com](mailto:fontainebellydancers@yahoo.groups.com)

Fontaine Sewer's List: [SewingFontaine@yahoogroups.com](mailto:SewingFontaine@yahoogroups.com)

Outlands' Website: <http://www.outlands.org>

SCA Website: <http://sca.org>

The Fine Print:  
Photos by: Lady Lasairfhiona

Some Clip Art by Dover Art  
All Other Art in the Public Domain

La Fontaine des Nouvelles is a publication by and for the members of the Barony of Fontaine dans Sable of the Society for Creative Anachronism (SCA), Inc.

It is not a corporate publication of the SCA and does not delineate SCA policies. Electronic copies of this newsletter are available from the Chronicler, Melody Buser 7 CR3191 Aztec, NM 87410, free of charge. Copyright 2007, Society for Creative Anachronism, Inc. Except where otherwise stated, all articles in this publication may be reprinted without special permission in other newsletters and publications of the SCA, Inc. subject to the following conditions: a) The text must be reprinted in its entirety without modifications; b) The author's name and original publication credit must be printed with the text; c) You must notify the Chronicler of Fontaine dans Sable indicating what was reprinted and in which publication. Submissions and Corrections. If you would like to submit an article or artwork to La Fontaine des Nouvelles, or if you have corrections or updates, please contact the Chronicler. The preferred method for submissions is an attachment to an e-mail message sent to [chronicler@fontainesca.org](mailto:chronicler@fontainesca.org)